



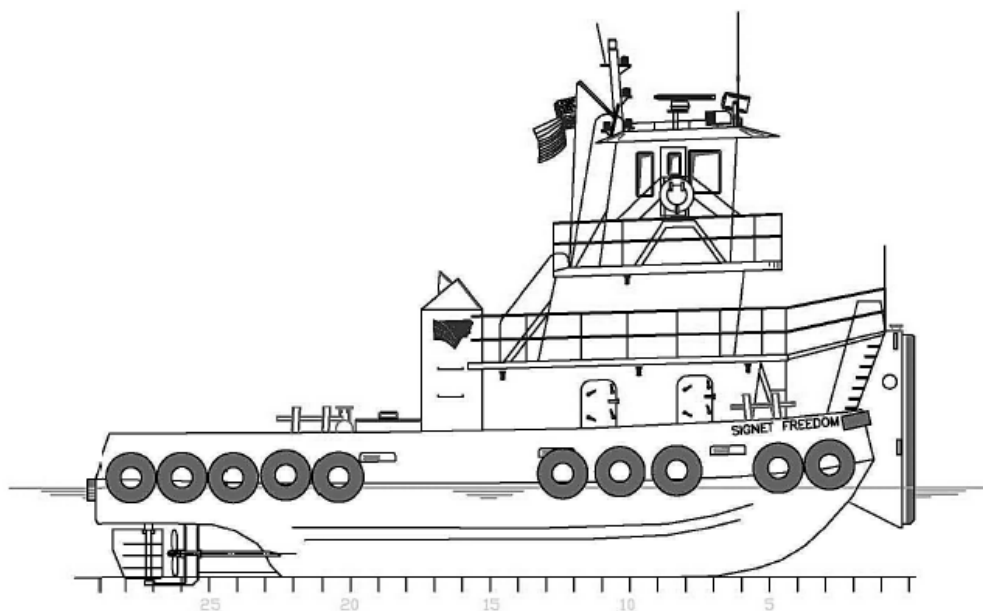
SIGNET FREEDOM

OWNER	Signet Maritime Corporation Houston, Texas	BERTHING	6
BUILT	Sun Towing, Morgan City, LA	PROPULSION	Two (2) Cummins Model KTA-19M3
YEAR BUILT	1997	Brake HP/Engine	640
REBUILT	Morgan City, Louisiana 1999	Total Horsepower	1,280
SERVICE	Inland Push Boat	Reduction Gears	Two (2) Twin Disc Model MG-5202DC
OFFICIAL NUMBER	1051793	Propellers	Two (2) 60.5" x 64" 4-Blade Aqualloy
DIMENSIONS		GENERATORS	John Deere 4045 DFM
LOA	60'	Power	40kW 60Hz, 208V
Breadth	26'	BOLLARD PULL	13 Metric Tonnes
Depth	8'	WINCHES	Two (2) Patterson WWP40E
Deep Draft	8'	Push Wire	Amsteel Blue 1-1/2" x 130' HMPE
Height of Eye	24'2"		
Gross Registered Tonnage	104		
CAPACITIES			
Fuel Oil	16,000 Gallons		
Potable Water	5,000 Gallons		
Lube Oil Storage	60 Gallons		
Gear Oil Storage	60 Gallons		

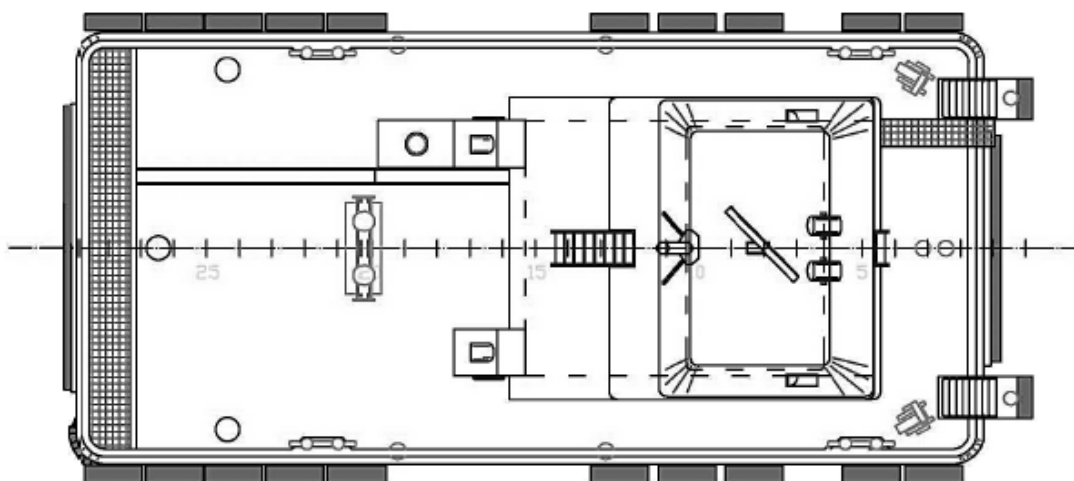
Signet Maritime Corporation
+1 713 840 1100

Shipping@SignetMaritime.com
SignetMaritime.com

Certified to ISO 9001:2008 · ISM · STCW 95 · MTSA · IMO SEEMP



Profile View



Plan View

SignetMaritime.com

Certified to ISO 9001:2008 · ISM · STCW 95 · MTSA · IMO SEEMP