



SIGNET ATLAS

VESSEL PARTICULARS

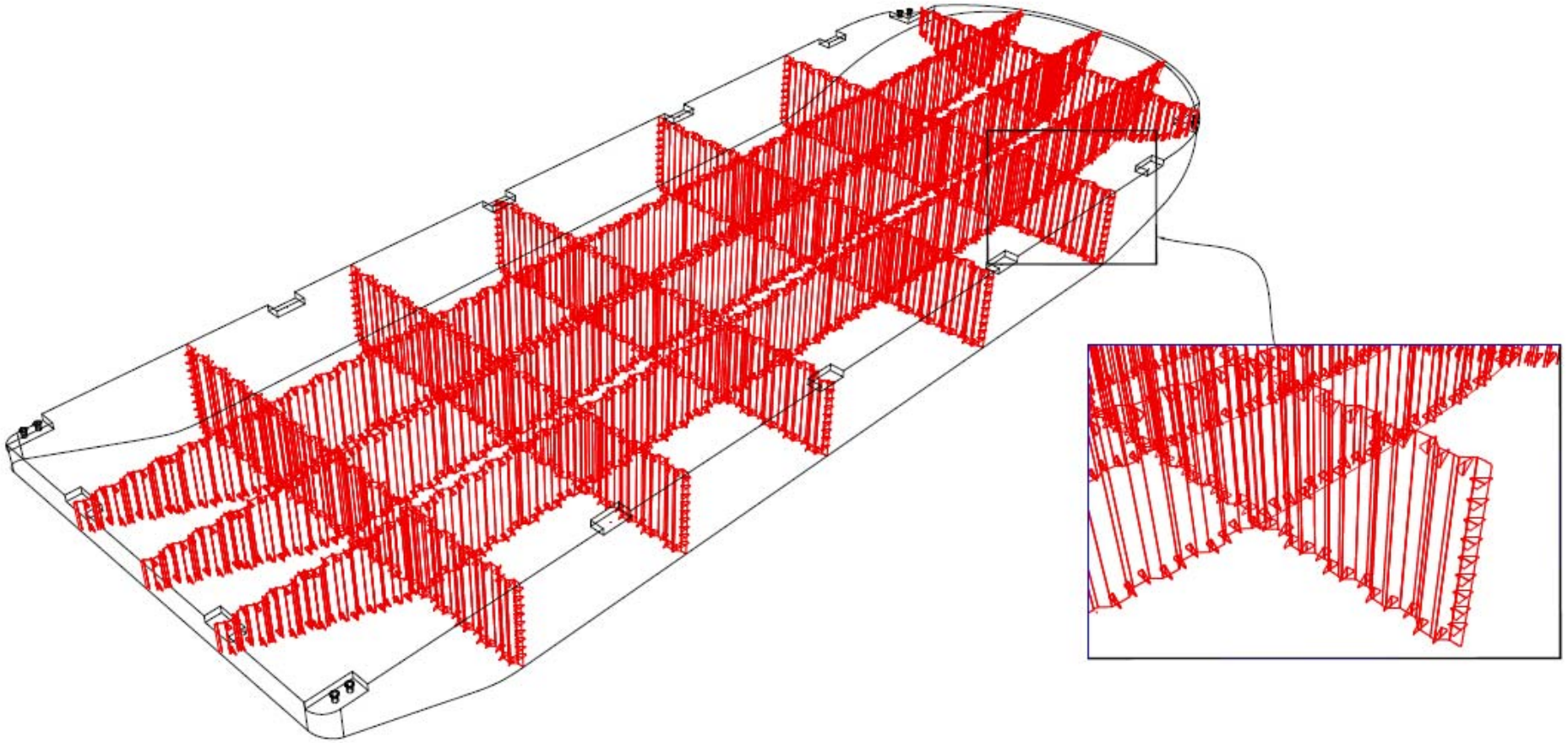
NAME	SIGNET ATLAS	LENGTH OVERALL	300 FEET (91.4m)
OWNER/CHARTERER	SIGNET MARITIME CORPORATION	BREADTH	100 FEET (30.5m)
PORT OF REGISTRY	PASCAGOULA, MISSISSIPPI	DEPTH	20 FEET (6.1m)
BUILDER	SIGNAL INTERNATIONAL ORANGE, TEXAS	LIGHT DRAFT	FWD 3 FT 1 IN (.9m) AFT 2 FT 11 IN (.9m)
HULL NO.	001-09	LOADED DRAFT	16 FT (4.9m)
DELIVERED	MARCH 2010	FRESH WATER ALLOWANCE	8 INCHES (.2m)
OFFICIAL NO.	1224814		
CLASSIFICATION	ABS ✕ A-1		
ABS ID NO.	10215644	GROSS REGISTERED	8,496
CONSTRUCTION	ALL WELDED STEEL, CORRUGATED	NET REGISTERED	2,548
	BULKHEADS	DEADWEIGHT	10,340 LONG TONS
BOW	PARABOLIC	LIGHTSHIP DISPLACEMENT	1,876 LONG TONS
STERN	RAKED WITH 2 FIXED SKEGS	LOADED DISPLACEMENT	12,216 LONG TONS

DESIGN DECK LOAD	HEAVY LIFT BARGE 6,000 LBS/SQ. FT (29.29 t/m ²)
DECK SQUARE FOOTAGE	29,000 SQ. FT (2694.2 m ²)
LONGITUDINAL CENTER OF GRAVITY	2 FT. AFT OF FR #25 (152 FT AFT OF FR #0)

Signet Maritime Corporation
International Operations Center
+1 361 776 7500

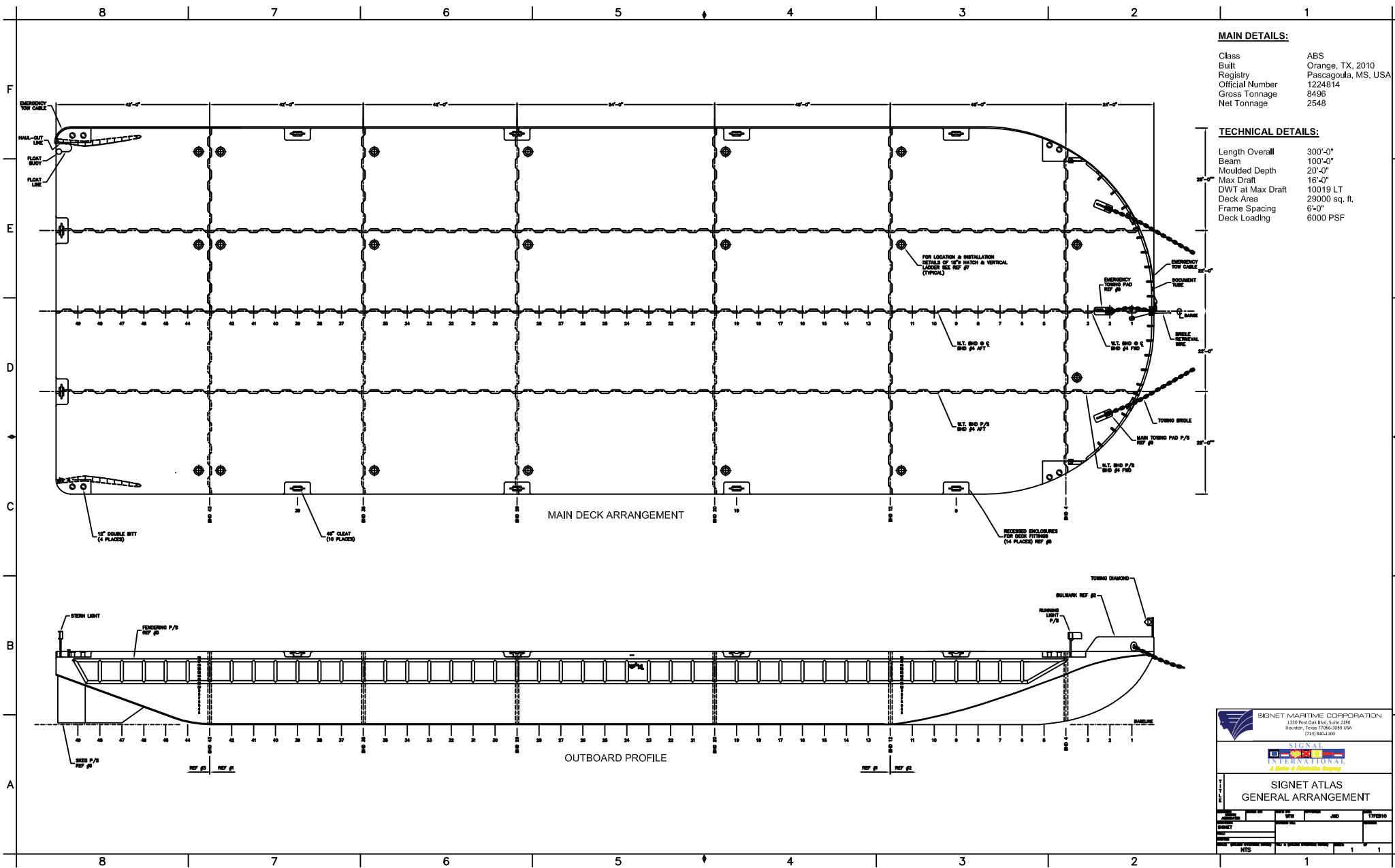
Shipping@SignetMaritime.com
www.signetmaritime.com

Certified to ISO 9001:2008, ISM, STCW 95, MTSA, AWO-RCP



www.signetmaritime.com

Certified to ISO 9001:2008, ISM, STCW 95, MTSA, AWO-RCP



MAIN DETAILS:

Class	ABS
Built	Orange, TX, 2010
Registry	Pascagoula, MS, USA
Official Number	1224814
Gross Tonnage	8496
Net Tonnage	2548

TECHNICAL DETAILS:

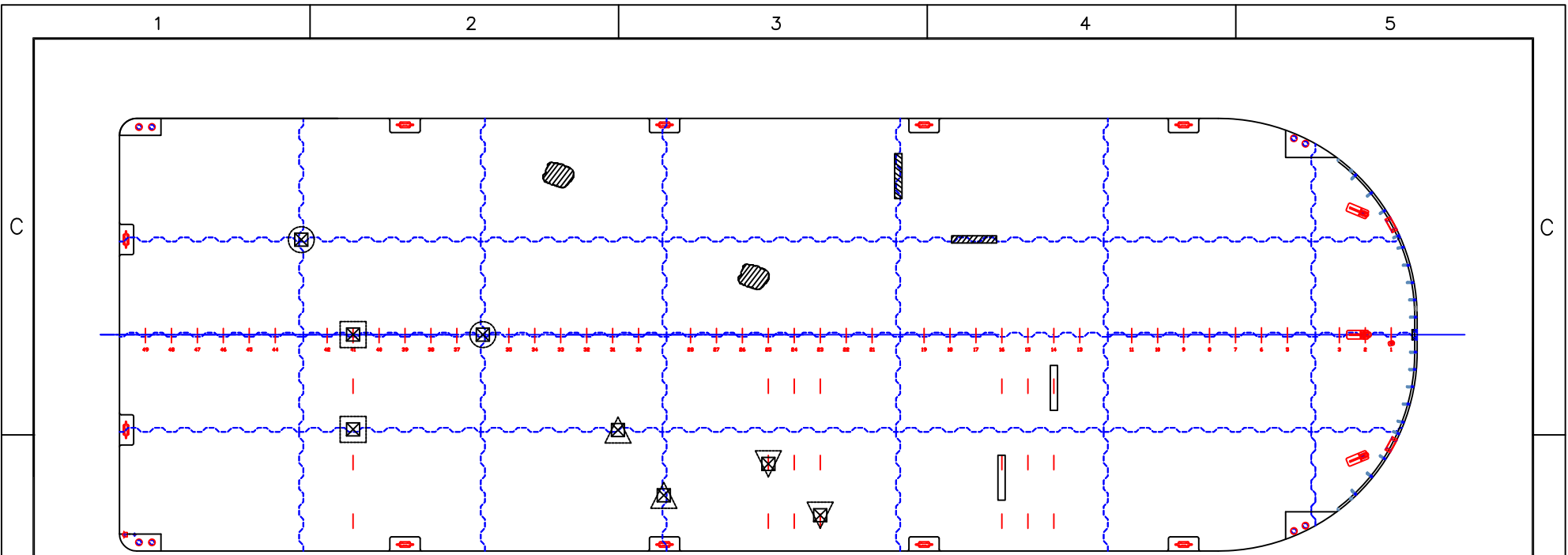
Length Overall	300'-0"
Beam	100'-0"
Moulded Depth	20'-0"
Max Draft	16'-0"
DWT at Max Draft	10019 LT
Deck Area	29000 sq. ft.
Frame Spacing	6'-0"
Deck Loading	6000 PSF

SIGNET MARITIME CORPORATION
 1310 Post Oak Blvd, Suite 2140
 Houston, Texas 77056-3688 USA
 (713) 840-1100







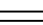
SIGNAL INTERNATIONAL
A Division of International Shiping

SIGNET ATLAS
GENERAL ARRANGEMENT

DESIGNED BY	DATE	BY	REVISED	AND	TYPE NO.
DRAWN BY					
CHECKED BY					
APPROVED BY					
100% DESIGN PROVIDED UNDER REF # 1 DESIGN PROVIDED UNDER REF # 1					
NTS					




LOAD DISTRIBUTION TYPE AND LIMITS

-  Uniform deck load anywhere = 6,000 lbs/ft² (29.29 t/m²)
-  Intersection longitudinal bulkhead and transverse bulkhead = 970 kips (440 t)
-  Intersection transverse frame and longitudinal bulkhead = 350 kips (160 t)
-  Anywhere on longitudinal bulkhead or transverse bulkhead = 350 kips (160 t)
-  Anywhere on transverse frame = 220 kips (100 t)
-  Line load on longitudinal bulkhead or transverse bulkhead = 70 kips/ft (100 t/m)
-  Line load on transverse frame = 35 kips/ft (50 t/m)

NOTES

Not all loads can be combined!
 Total load not to exceed 10,000 LT, see also Trim & Stability booklet
 Support area point loads at least 30' x 30'
 Support width line loads at least 12'
 Still water bending moment to be checked
 When in doubt, consult owner

Particulars are believed to be correct but not guaranteed.

VESSEL <i>SIGNET ATLAS</i>		 ARGONAUTICS MARINE ENGINEERING <small>specialists in marine heavy-lift transportation engineering marine surveyors • naval architects</small>	
DRAWING DECK LOAD DIAGRAM			
VESSEL TYPE DECK BARGE	SCALE <i>n.t.s.</i>	170 Windsor River Road, Suite B • Windsor, CA 95492-8079 • USA Phone (707) 838-3925 Info@argonautics.com www.argonautics.com	
DRAWING NUMBER 10500 - 101	SHEET 1/1	CLIENT SIGNET MARITIME CORPORATION	
REVISION 2	DATE 03/26/'10	DRAWN F.v.H.	<small>Copyright by Argonautics Marine Engineering. The contents of this drawing are property of Argonautics Marine Engineering. No part may be brought to the knowledge of third parties in original or reproduction in any form or by any means, electronic, mechanical, photocopying, recording or otherwise, without prior written permission of Argonautics Marine Engineering.</small>