



## SIGNET RANGER

<b>OWNER</b>	Signet Maritime Corporation Houston, Texas	<b>BERTHING</b>	4
<b>DESIGNER</b>	A&B Industries, Amelia, LA	<b>PROPULSION</b>	Two (2) CAT Model 3512B
<b>BUILT</b>	A&B Industries, Amelia, LA	Brake HP/Engine	1,500
<b>YEAR BUILT</b>	2004	Total Horsepower	3,000
<b>SERVICE</b>	Harbor Tug	Reduction Gears	Two (2) Twin Disc Model MG5600
<b>OFFICIAL NUMBER</b>	1152107	Propellers	Two (2) 86" x 55" 2-5 Blade Aqualloy
<b>DIMENSIONS</b>		<b>GENERATORS</b>	Two (2) CAT Model 3054T
LOA	82'	Power	72 kW, 208V, 60Hz
Breadth	26'	<b>BOLLARD PULL</b>	36 Metric Tonnes
Depth	11'	<b>DECK EQUIPMENT</b>	Capstan McElroy/Catchot 21" Hydraulic, 30 HP
Deep Draft	9'	<b>BOW HAWSER</b>	2-1/4" x 200' Neutron 12 HMPE
Height of Eye	16'5"		
Gross Registered Tonnage	98		
<b>CAPACITIES</b>			
Fuel Oil	37,000 Gallons		
Potable Water	5,000 Gallons		
Lube Oil Storage	150 Gallons		
Dirty Oil Storage	150 Gallons		

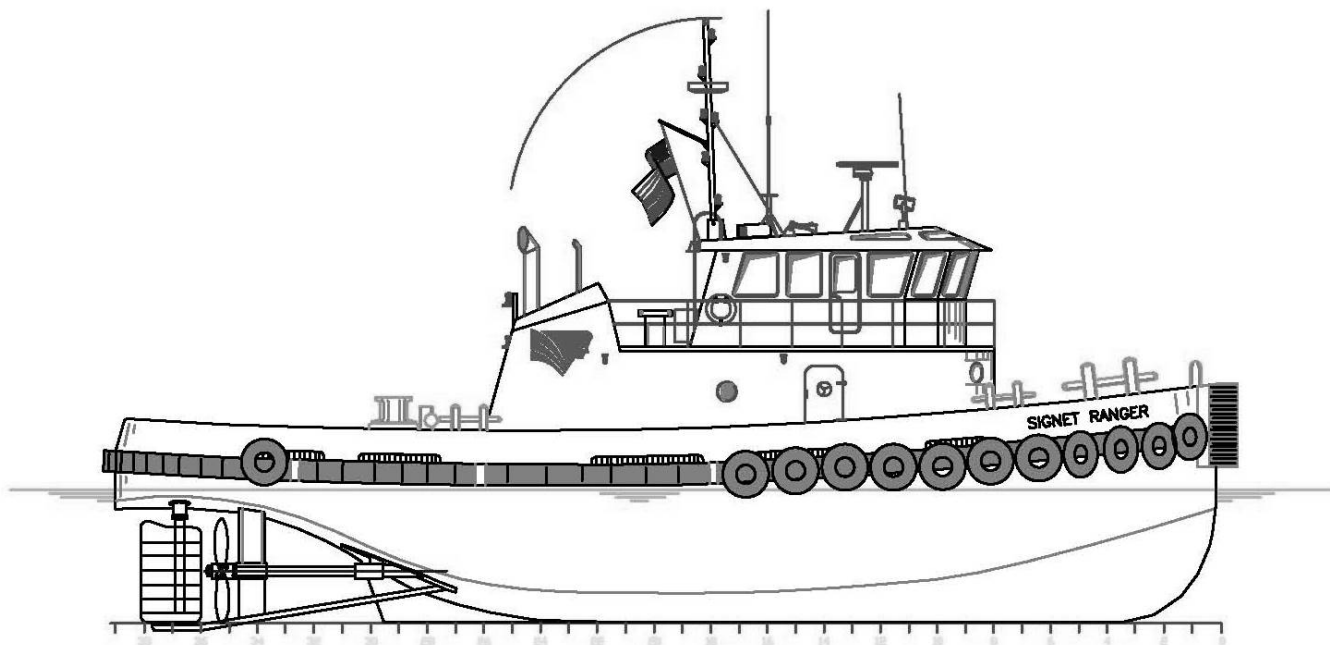
Signet Maritime Corporation

+1 713 840 1100

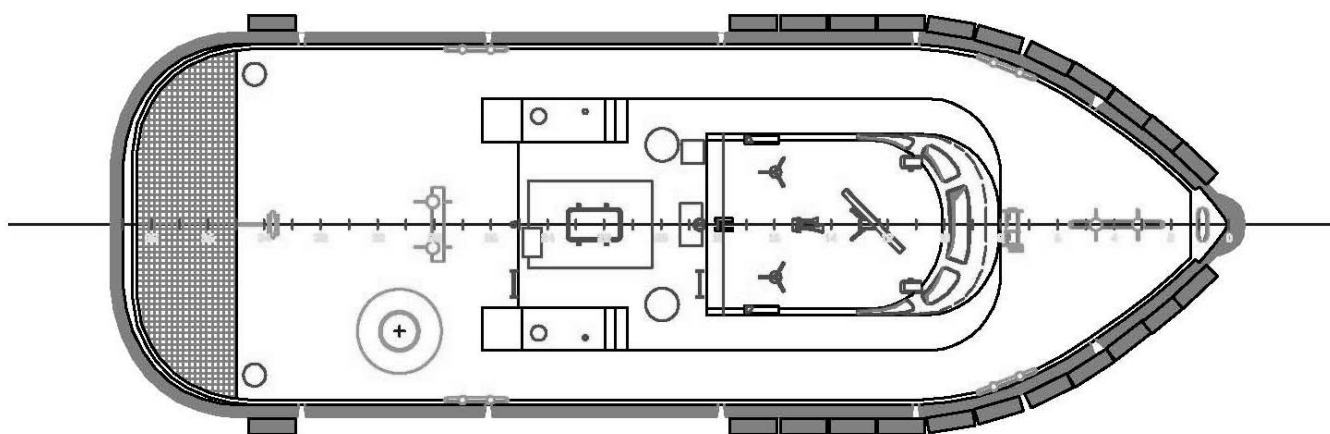
[Shipping@SignetMaritime.com](mailto:Shipping@SignetMaritime.com)

[SignetMaritime.com](http://SignetMaritime.com)

Certified to ISO 9001:2008 • ISM • STCW 95 • MTSA • IMO SEEMP



Profile View



Plan View