



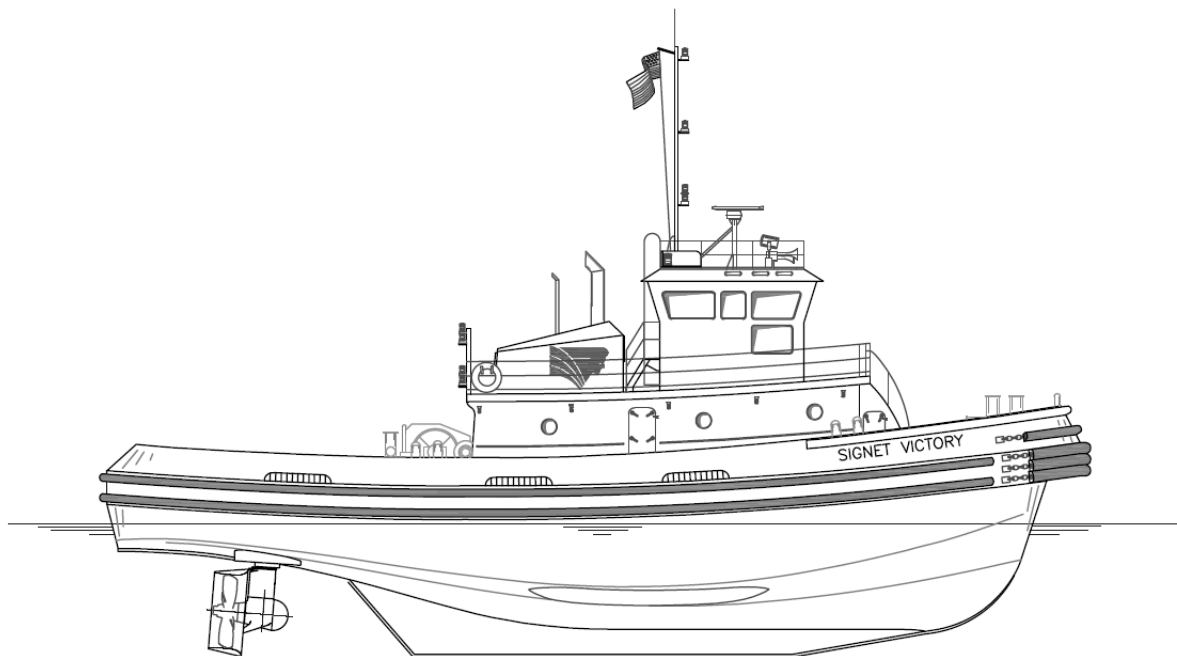
## SIGNET VICTORY

<b>OWNER</b>	Signet Maritime Corporation Houston, Texas	<b>BERTHING</b>	6
<b>DESIGNER</b>	Main Iron Works	<b>PROPULSION</b>	Two (2) EMD Model 12-645E6
<b>BUILDER</b>	Colle Shipyard Pascagoula, Mississippi	Brake HP/Engine	1,500
<b>YEAR BUILT</b>	2001	Total Horsepower	3,000
<b>SERVICE</b>	Harbor, Ocean Towing-ASD Tug	Effective Horsepower	3,900
<b>CLASSIFICATION</b>	ABS Loadline	Z-Drives	Two (2) AquaMaster Model US1701
<b>OFFICIAL NUMBER</b>	1115336	Propellers	Two (2) 84.6" x 70.67" 4-Blade Stainless Steel in Kort Nozzle
<b>DIMENSIONS</b>		<b>GENERATORS</b>	Two (2) Cummins 6B5.9 50kW, 60Hz Two (2) Marathon Generators
LOA	81'6"	Power	
Breadth	32'	<b>BOLLARD PULL</b>	42.5 Metric Tonnes
Depth	13'1"	<b>WINCHES</b>	
Deep Draft	13'	Bow Hawser	2-1/2" x 200' Neutron 12 HMPE
Height of Eye	25'	Stern	Markey TDS-28, Single Drum
Gross Registered Tonnage	169	Stern Hawser	One (1) 1-3/4" x 1500', IWRC
Gross Tonnage ITC	215		
<b>CAPACITIES</b>			
Fuel Oil	34,000 Gallons		
Potable Water	2,750 Gallons		

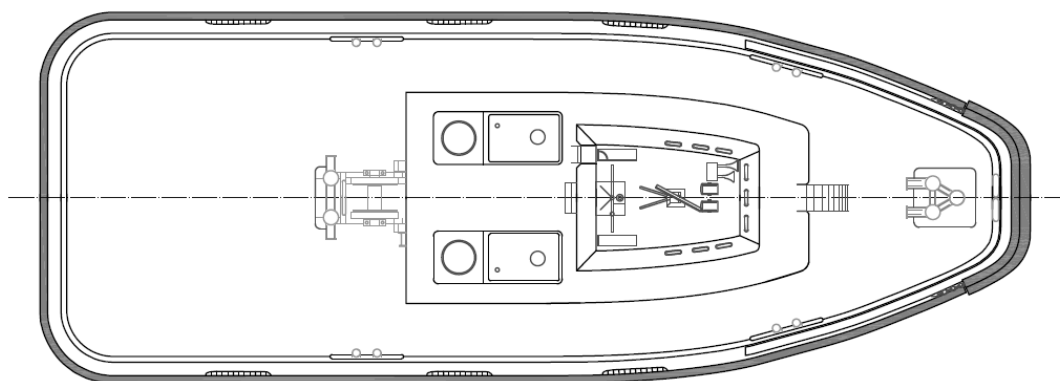
Signet Maritime Corporation  
+1 713 840 1100

[Shipping@SignetMaritime.com](mailto:Shipping@SignetMaritime.com)  
[SignetMaritime.com](http://SignetMaritime.com)

**Certified to ISO 9001:2008 · ISM · STCW 95 · MTSA · IMO SEEMP**



PROFILE VIEW



PLAN VIEW