

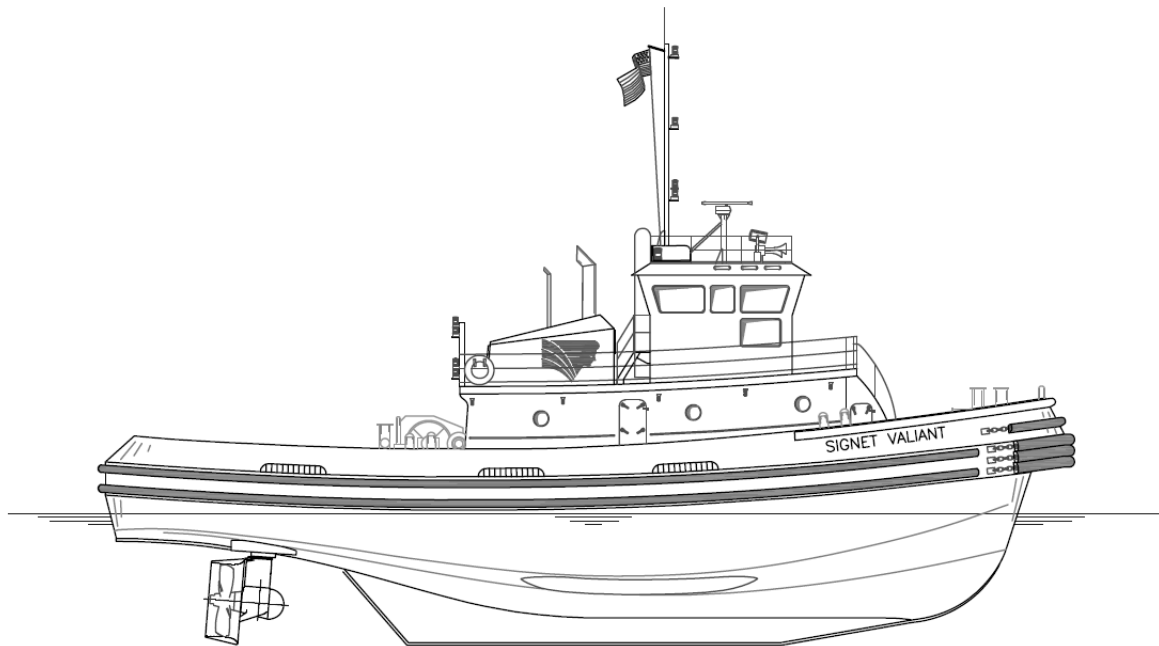


SIGNET VALIANT

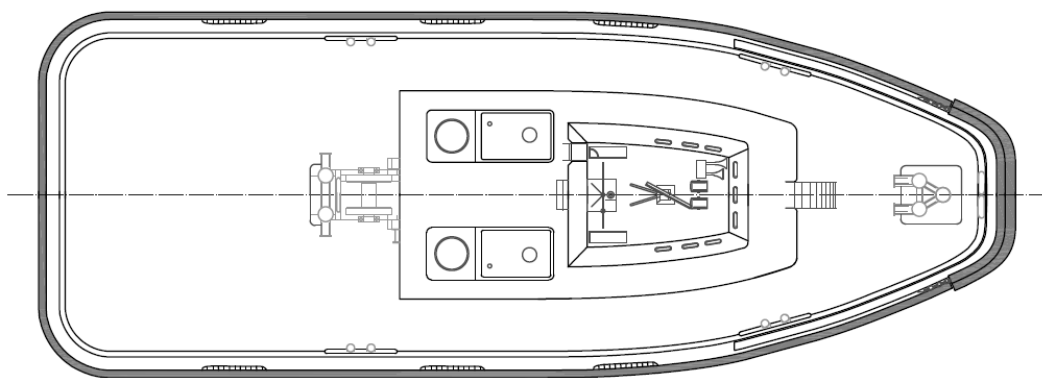
OWNER/CHARTERER	Signet Maritime Corporation Houston, Texas	BERTHING	5
DESIGNER	Main Iron Works	PROPULSION	Two (2) EMD Model 12-645E6
BUILDER	Colle Shipyard Pascagoula, Mississippi	Brake HP/Engine	1,500
YEAR BUILT	1994	Total Horsepower	3,000
SERVICE	Harbor, Ocean Towing-ASD Tug	Effective Horsepower	3,900
CLASSIFICATION	ABS Loadline	Z-Drives	Two (2) Ulstein Model 1350H
OFFICIAL NUMBER	1027362	Propellers	Two (2) 80" x 68" 4-Blade Stainless Steel in Kort Nozzles
DIMENSIONS		GENERATORS	Two (2) Detroit Diesel 4-71 Two (2) Reliance Electric 50 kW
LOA	81'6"	Power	
Breadth	32'	BOLLARD PULL	42.5 Metric Tonnes
Depth	16'	WINCHES	
Deep Draft	13'	Bow Hawser	2-1/2" x 200' Neutron 12 HMPE
Height of Eye	25'	Stern	Intercon 78155, Single Drum
Gross Registered Tonnage	169	Stern Hawser	One (1) 1-1/2" x 1500', IWRC
Gross Tonnage ITC	215		
CAPACITIES			
Fuel Oil	34,000 Gallons		
Potable Water	2,750 Gallons		
Lube Oil Storage	680 Gallons		

Signet Maritime Corporation
+1 713 840 1100

Shipping@SignetMaritime.com
SignetMaritime.com



PROFILE VIEW



PLAN VIEW

SignetMaritime.com

Certified to ISO 9001:2008 · ISM · STCW 95 · MTSA · IMO SEEMP