



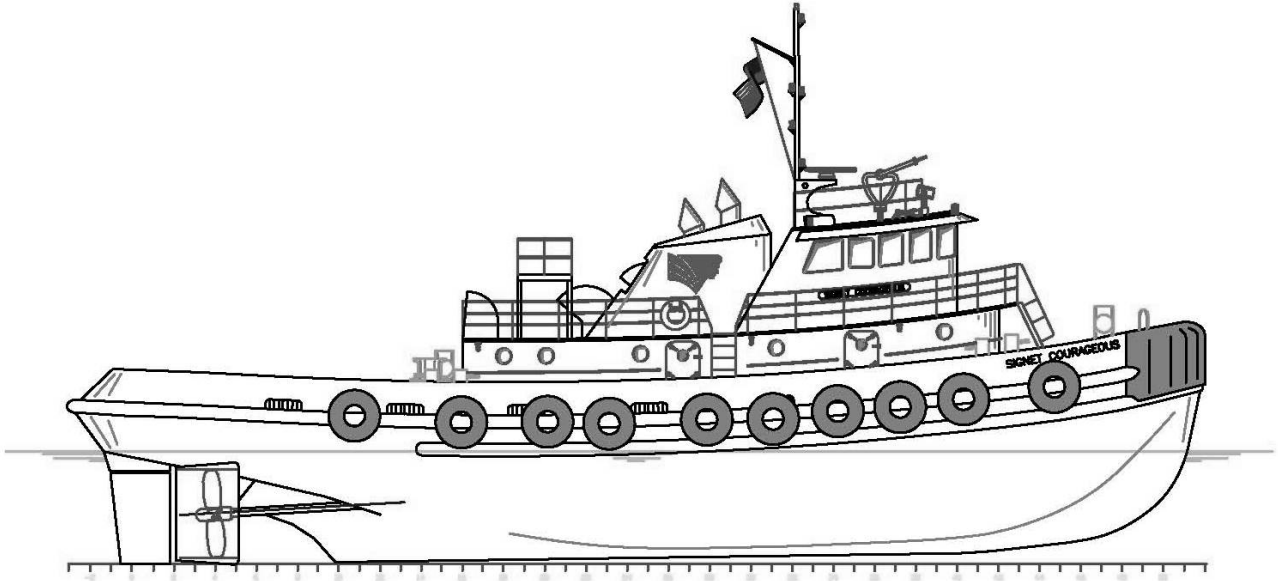
SIGNET COURAGEOUS

OWNER	Signet Maritime Corporation Houston, Texas	BERTHING	6
BUILT	Main Iron Works, Houma, LA	PROPULSION	Two (2) EMD Model 12-645-E2
YEAR BUILT	1975	Brake HP/Engine	1,500
REBUILT	Corpus Christi, 2004	Total Horsepower	3,000
CLASSIFICATION	ABS Loadline	Effective Horsepower	3,900
SERVICE	Harbor Tug	Reduction Gears	Two (2) Falk Model 1230MRD-C
OFFICIAL NUMBER	568354	Propellers	Two (2) 92" x 68" 2-4 Blade in Nozzles
DIMENSIONS		GENERATORS	Two (2) Detroit Diesel Model 6-71
LOA	90'	Power	75 kW (each), 60Hz, 480V
Breadth	28'	BOLLARD PULL	44 Metric Tonnes
Depth	15'	FIRE MONITOR	Detroit Diesel 6-71 Flow: 2,000 GPM Total Dynamic Head: 262'
Deep Draft	12'	DECK EQUIPMENT	Capstan Bensen Electric, 40 HP
Height of Eye	18'5"	BOW HAWSER	2-1/2" X 300', Samson Quantum-8 HMPE
Gross Registered Tonnage	152		
CAPACITIES			
Fuel Oil	26,000 Gallons		
Potable Water	4,000 Gallons		
Lube Oil Storage	400 Gallons		

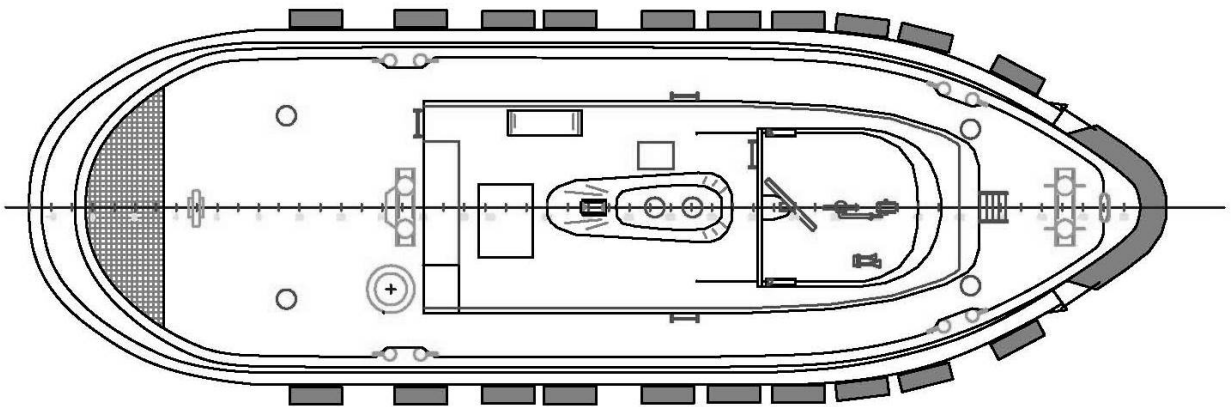
Signet Maritime Corporation
+1 713 840 1100

Shipping@SignetMaritime.com
SignetMaritime.com

Certified to ISO 9001:2008 · ISM · STCW 95 · MTSA · IMO SEEMP



Profile View



Plan View