



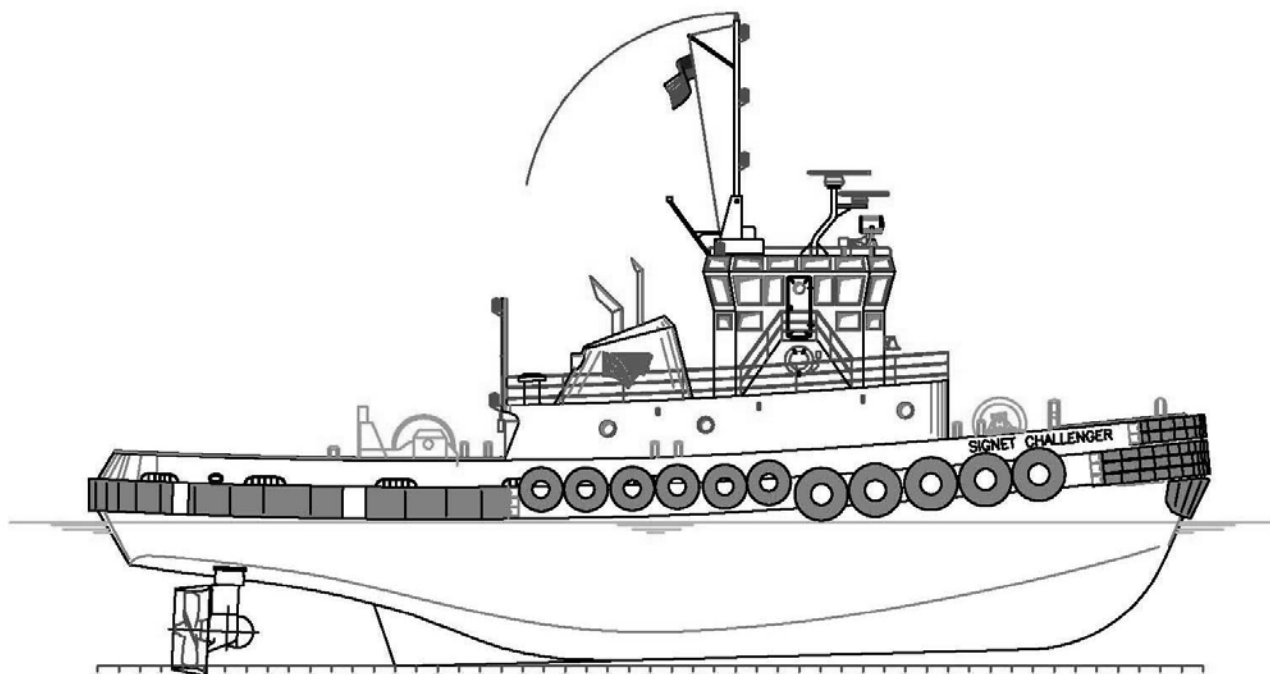
SIGNET CHALLENGER

OWNER	Signet Maritime Corporation Houston, Texas	BERTHING	5
DESIGNER	Entech & Associates, Inc. Houma, Louisiana	PROPULSION	Two (2) Cummins Model QSK60
BUILDER	Thoma-Sea Boat Builders Houma, Louisiana	Brake HP/Engine	2,100
YEAR BUILT	2003	Total Horsepower	4,200
SERVICE	Harbor-ASD Tug	Effective Horsepower	5,250
CLASSIFICATION	ABS Loadline	Z-Drives	Two (2) Rolls Royce Model US205
OFFICIAL NUMBER	1145058	Propellers	Two (2) 84.6" x 78.6" 4-Blade NIBRAL in Kort Nozzles
DIMENSIONS		GENERATORS	Two (2) Cummins Model 6BTA5.9
LOA	104'	Power	95kW (each), 60Hz, 208V
Breadth	36'	BOLLARD PULL	
Depth	16'	Ahead	48.58 Metric Tonnes
Deep Draft	13'6"	Astern	44.34 Metric Tonnes
Height of Eye	22'7"	WINCHES	
Gross Registered Tonnage	186	Bow	Markey Model DYSF-42 2-1/2" x 430', Samson Saturn-12 HMPE
Gross Tonnage ITC	379	Stern	CME Model 1M160-200D7-1257-130 Single Drum Electric, 100 HP
CAPACITIES		TOWING WIRE	2" x 2000', IWRC
Fuel Oil	107,000 Gallons		
Potable Water	5,000 Gallons		
Lube Oil Storage	500 Gallons		
Hydraulic Oil Storage	500 Gallons		
Dirty Oil Storage	1,000 Gallons		

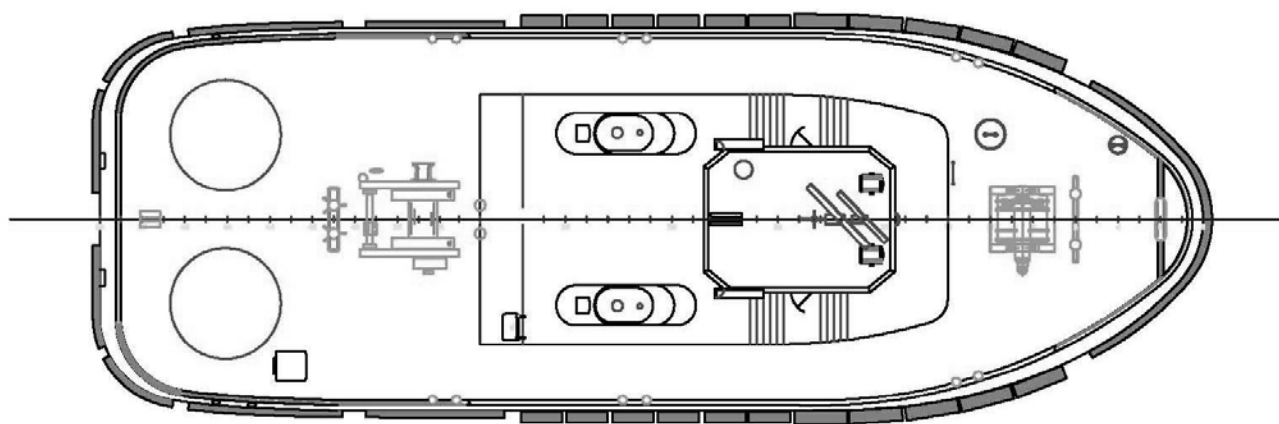
Signet Maritime Corporation
+1 713 840 1100

Shipping@SignetMaritime.com
SignetMaritime.com

Certified to ISO 9001:2008 · ISM · STCW 95 · MTSA · IMO SEEMP



Profile View



Plan View