



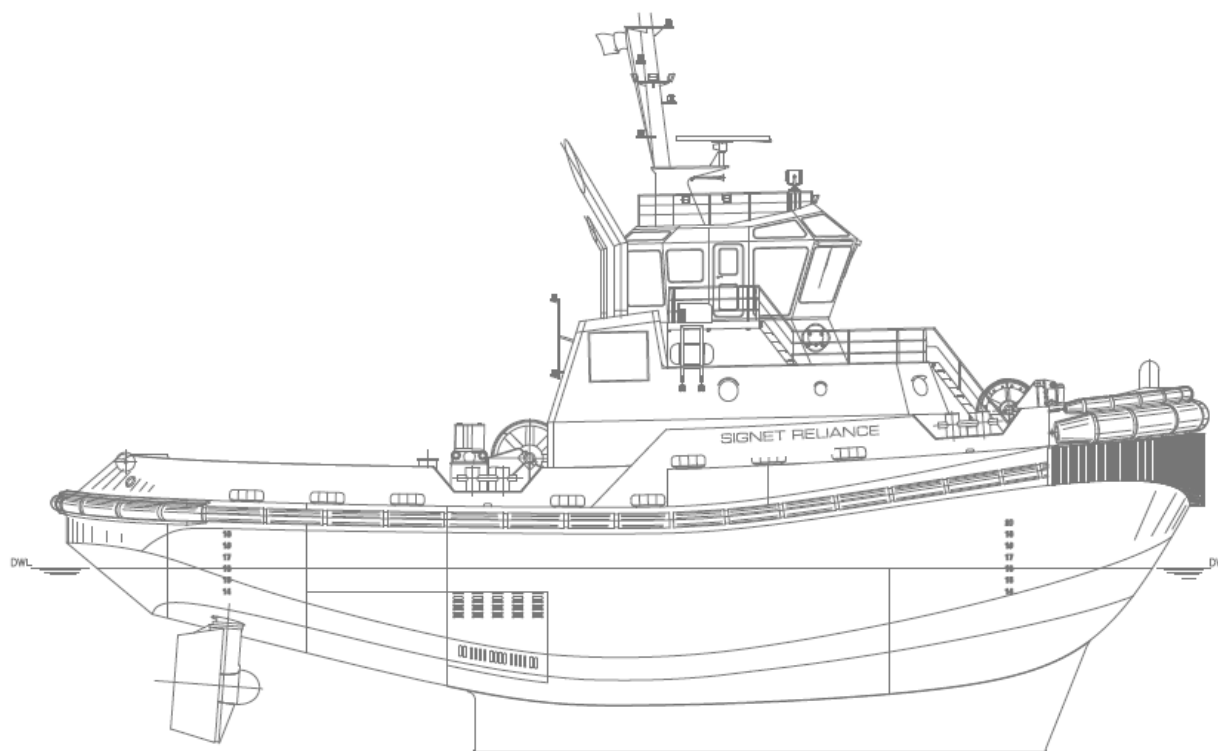
## SIGNET RELIANCE

<b>OWNER</b>	Signet Maritime Corporation Houston, Texas	<b>BERTHING</b>	8
<b>DESIGNER</b>	Robert Allan, Ltd. Vancouver, B.C. Canada	<b>PROPULSION</b>	Two (2) Caterpillar Model 3516B
<b>BUILDER</b>	Colle Shipyard Pascagoula, Mississippi	Brake HP/Engine	2,500
<b>YEAR BUILT</b>	2007	Total Horsepower	5,000
<b>SERVICE</b>	Harbor, Offshore Towing-ASD Tug	Effective Horsepower	6,250
<b>CLASSIFICATION</b>	ABS Loadline, FiFi1	Z-Drives	Two (2) Rolls Royce Model US205
<b>OFFICIAL NUMBER</b>	1205626	Propellers	Two (2) 94.5" Diameter (2,400 mm) 4-Blade Stainless Steel
<b>DIMENSIONS</b>		<b>GENERATORS</b>	Two (2) Cummins 6 CTA 8.3 DM
LOA	98'	Power	Two (2) Onan Generators, 125kW, 60Hz, 480V
Breadth	36'	<b>FIFI SYSTEM</b>	(1) Nijhuis Pump Model HGTF-1-350.650
Depth	17'2"	Prime Mover	(1) Cummins Model KTA50-M2
Deep Draft	15'5"	Monitors	(2) FFS Model 1200LB, Remote Controlled Remote Controlled Monitors
Height of Eye	25'	<b>BOLLARD PULL</b>	62.6 Metric Tonnes
Gross Registered Tonnage	199	<b>WINCHES</b>	
Gross Tonnage ITC	393	Bow	Burrard Iron Works HE
<b>CAPACITIES</b>		Bow Hawser	2-3/4" x 600' HMPE
Fuel Oil	54,000 Gallons	Stern	HJ Single Drum Burrard Iron Works
Potable Water	3,000 Gallons	Stern Hawser	2-1/4" x 1500' IWRC

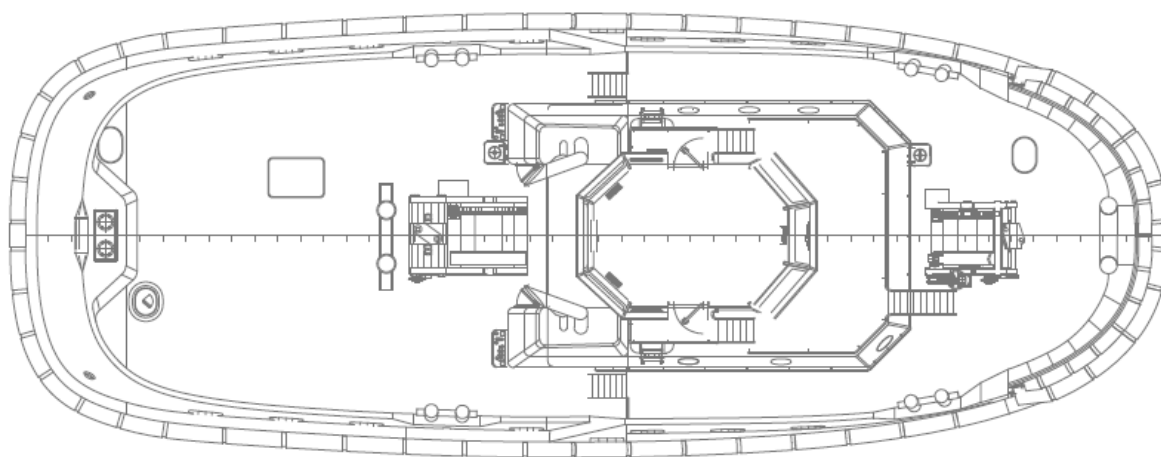
Signet Maritime Corporation  
+1 713 840 1100

[Shipping@SignetMaritime.com](mailto:Shipping@SignetMaritime.com)  
[SignetMaritime.com](http://SignetMaritime.com)

Certified to ISO 9001:2008 · ISM · STCW 95 · MTSA · IMO SEEMP



Profile View



Plan View

[SignetMaritime.com](http://SignetMaritime.com)

Certified to ISO 9001:2008 · ISM · STCW 95 · MTSA · IMO SEEMP