



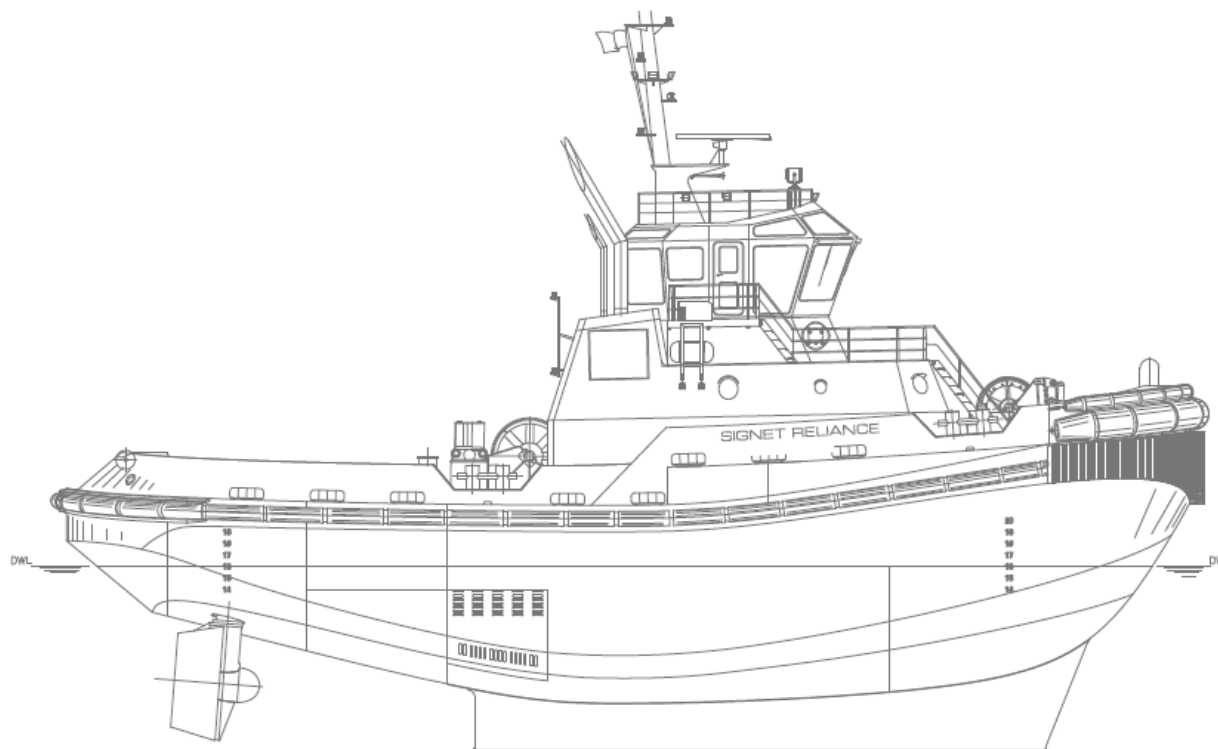
SIGNET RELIANCE

OWNER	Signet Maritime Corporation Houston, Texas	BERTHING	8
DESIGNER	Robert Allan, Ltd. Vancouver, B.C. Canada	PROPULSION	Two (2) Caterpillar Model 3516B
BUILDER	Colle Shipyard Pascagoula, Mississippi	Brake HP/Engine	2,500
YEAR BUILT	2007	Total Horsepower	5,000
SERVICE	Harbor, Offshore Towing-ASD Tug	Effective Horsepower	6,250
CLASSIFICATION	ABS Loadline, FiFi1	Z-Drives	Two (2) Rolls Royce Model US205
OFFICIAL NUMBER	1205626	Propellers	Two (2) 94.5" Diameter (2,400 mm) 4-Blade Stainless Steel
DIMENSIONS		GENERATORS	Two (2) Cummins 6 CTA 8.3 DM
LOA	98'	Power	Two (2) Onan Generators, 125kW, 60Hz, 480V
Breadth	36'	FIFI SYSTEM	(1) Nijhuis Pump Model HGTF-1-350.650
Depth	17'2"	Prime Mover	(1) Cummins Model KTA50-M2
Deep Draft	15'5"	Monitors	(2) FFS Model 1200LB, Remote Controlled Remote Controlled Monitors
Height of Eye	25'		
Gross Registered Tonnage	199	BOLLARD PULL	62.6 Metric Tonnes
Gross Tonnage ITC	393		
CAPACITIES		WINCHES	
Fuel Oil	54,000 Gallons	Bow	Burrard Iron Works HE
Potable Water	3,000 Gallons	Bow Hawser	2-3/4" x 600' HMPE
		Stern	HJ Single Drum Burrard Iron Works
		Stern Hawser	2-1/4" x 1500' IWRC

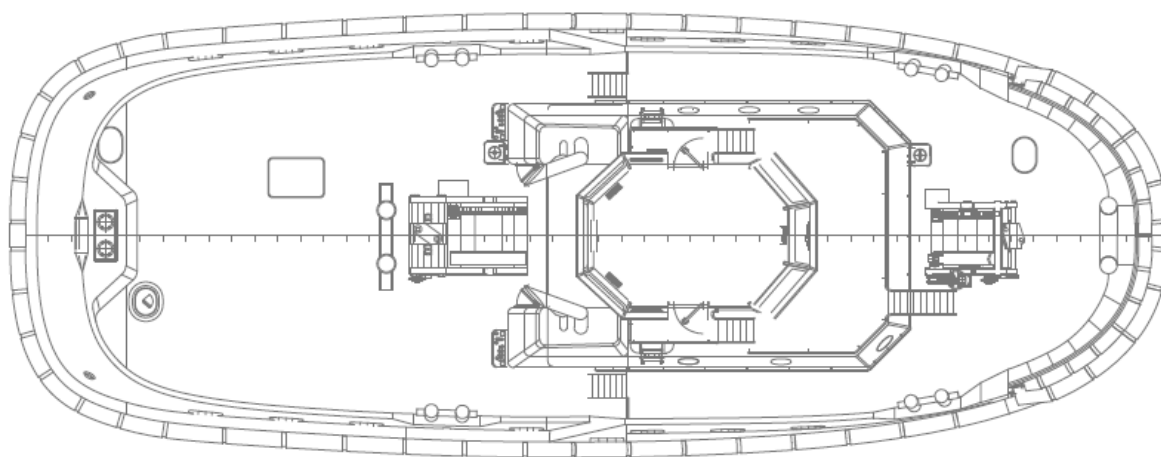
Signet Maritime Corporation
+1 713 840 1100

Shipping@SignetMaritime.com
SignetMaritime.com

Certified to ISO 9001:2008 · ISM · STCW 95 · MTSA · IMO SEEMP



Profile View



Plan View

SignetMaritime.com

Certified to ISO 9001:2008 · ISM · STCW 95 · MTSA · IMO SEEMP